

正 本

檔 號：

保存年限：

國立屏東科技大學 函

22069

新北市板橋區三民路二段37號12樓A3

地址：912屏東縣內埔鄉老埤村學府路1號

承辦人：柯千禾

電話：08-7703202轉7189

傳真：08-7740122

電子信箱：ko@mail.npust.edu.tw

受文者：台灣省土木技師公會

發文日期：中華民國100年5月30日

發文字號：屏科大工字第1002330023號

速別：普通件

密等及解密條件或保密期限：

附件：如文

主旨：本校舉辦「2011年（第十九屆）國際精實營建年會：夏令學校」，敬請惠予公告並鼓勵 貴屬踴躍報名參加，請 查照。

說明：

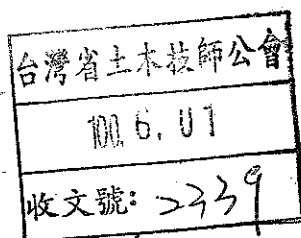
- 一、本校預定2011年7月17日至18日於秘魯(Peru)首都利瑪(Lima)舉辦「2011年（第十九屆）國際精實營建年會：夏令學校」。
- 二、此活動主要提供來自全球碩士班與博士班研究生報告與討論精實營建相關之研究議題，資深研究人員與業界人士將與學生共同討論，全程以英文進行。
- 三、參加人員不須繳交註冊費用，隨函檢附摘要格式。
- 四、詳細內容請參閱活動網址 http://www.ppml.url.tw/IGLC_19_Summer_School/



正本：中華民國土木技師公會全國聯合會、台灣省土木技師公會、台北市土木技師公會、高雄市土木技師公會、台北縣土木技師公會、國立臺灣大學土木工程學系、國立中央大學營建管理研究所、淡江大學土木工程學系、國立交通大學土木工程學系、中原大學土木工程學系、中華大學營建工程學系、國立中興大學土木工程學系、逢甲大學土木工程學系、國立成功大學土木工程學系、國立高雄大學都市發展與建築研究所、國立宜蘭大學土木工程學系、大葉大學休閒事業管理系、國立臺灣科技大學營建工程學系、國立臺北科技大學土木工程學系、中臺科技大學環境與安全衛生工程學系、朝陽科技大學營建工程學系、國立雲林科技大學營建工程學系、國立高雄第一科技大學營建工程學系、國立高雄應用科技大學土木工程學系、蘭陽技術學院電腦應用學系、聖約翰科技大學機械與電腦輔助工程學系、義守大學土木與生態工程學系、國立聯合大學土木與防災工程學系、國防大學環境資訊及工程學系、國立高雄大學土木與環境工程學系、國立金門大學土木與工程管理學系

副本：本校土木工程系柯千禾副教授

校長 古源光



IGLC 19 SUMMER SCHOOL

Student name: Jun-Wei Lee

Program: Master graduate study

Institute: Department of Civil Engineering, National Pingtung University of Science and Technology, Taiwan.

Advisor: Chien-Ho Ko

Purpose:

Give both the wider aims of the research and the particular objective that you intend to achieve in the paper. Why are these important and to whom? What is new in the paper? If appropriate, include the hypothesis or research question that the paper addresses. Abstract length is up to three pages. For those students attending this event are requested to submit abstracts by June 20, 2011 through the online submission system at <https://cmt.research.microsoft.com/IGLCSS2011/> Full paper is not required for the school. Details about this event can be found at http://www.ppml.url.tw/IGLC_19_Summer_School/

Methodology:

How have you delivered your purpose? Describe the research method(s) used. What is the approach to the topic and what theoretical or empirical resources have you drawn on? A research flow could be displayed in this part, as shown in Figure 1.

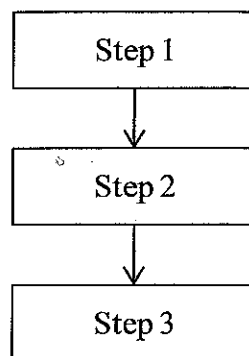


Figure 1: Research Flow

Findings:

What is the main finding? This will include results, analysis, discussion, and/or results.

Implications:

Is there a commercial, economic, social or environmental impact? State any practical applications and benefits for projects, enterprises or the wider society. Are there any negative consequences? Are there changes to practice which should be made as a result of this research? Are there any theoretical implications? How should it influence attitudes in the industry, or public at large? Does it suggest changes in government or industry policy? Will it affect quality of life? Include any identified limitations in the research process and suggestions for future research. A table could be

summarized in this part, as shown in Table 1.

Table 1: Implication Summary

Trades	Job sequence
A	1, 2, 3, 4, 5, 6
B	2, 1, 3, 4, 5, 6
C	1, 3, 2, 4, 5, 6
D	1, 2, 4, 3, 5, 6
E	1, 2, 3, 5, 4, 6

Keywords: up to six keywords or phrases.

Theme: please state which theme(s) the paper most closely addresses.

Theory;

Product development and design management;

Prefabrication, assembly and open building;

Supply chain management;

Production system design;

Production planning and control;

Safety, quality and environment;

Enabling lean with information technology;

Knowledge management;

People, culture and change;

Contract and cost management.